

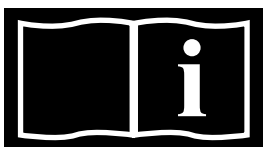
## JET SWIM ELEGANCE 70



## INSTALLATION AND USER GUIDE



Bespoke Pools, LTD  
UK tel: 1 **01268 710425**  
Sales@MyPoolDirect.co.uk



Read the instructions

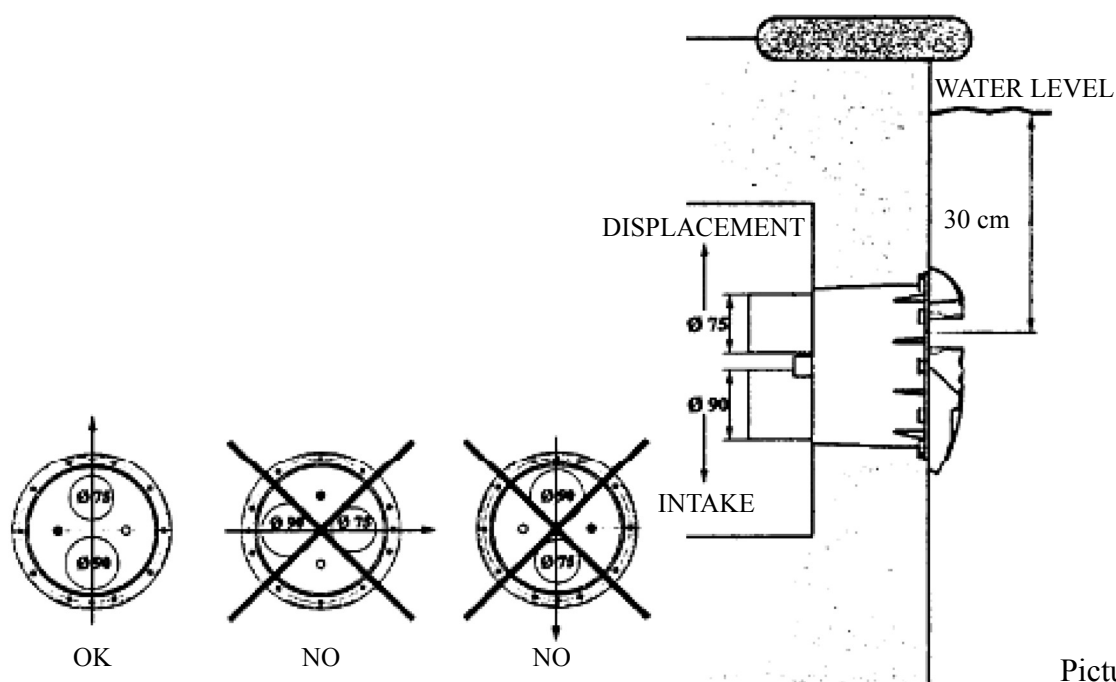
## 1. Installation mounting

By purchasing the ELEGANCE device, you obtained a high-quality product that will help you to enjoy the time spent in your pool.

The 'jet swim' device, ELEGANCE is delivered, with an engine with inputs of 2,2kW. The electric pump should be installed as close as possible to the pool in order to reach the maximum input and to reduce loss caused by the friction. The original diameters of the accessories from the PVC materials delivered with the installation should always be respected. We do not recommend to place the pump further than 15 m from the pool. Pumps being the part of this device don't have a self-suction function. It is necessary to install them under the water level. The technology device area must be aired sufficiently, use a fan if needed, to prevent water condensation. You can ensure the correct functioning of the device by respecting these rules.

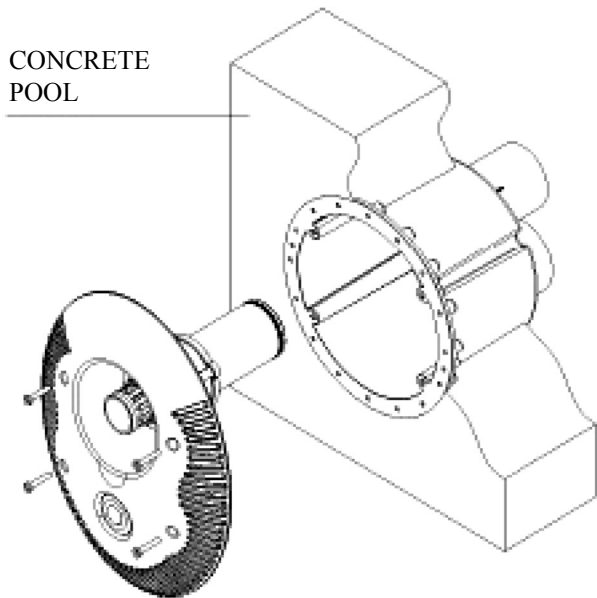
## 2. Mounting the 'jet swim' device

During the installation of the 'jet swim' body, please bear in mind that it must be placed in the position indicated in the picture 1. Displacement of a 75mm diameter and a suction of a 90mm diameter must be installed in the vertical position that the side of the displacement is higher than the side of the suction (90 mm diameter) see picture 1. The 'jet swim' device must be placed in a way that the centre of the jet will be approximately 30cm under the water level. (see picture 1). You must follow and keep these instructions and mount correctly the device to ensure the right operating of the 'jet swim'.



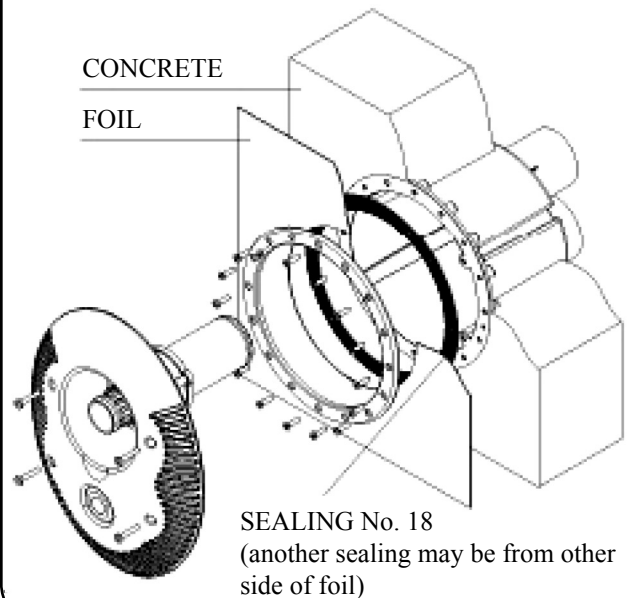
Picture 1

**INSTALLATION IN CONCRETE SWIMMING POOL**



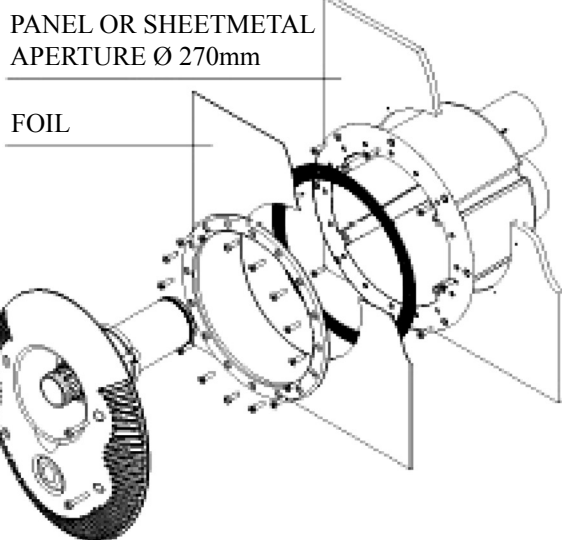
Picture 2a

**INSTALLATION IN CONCRETE SWIMMING POOL WITH FOIL**



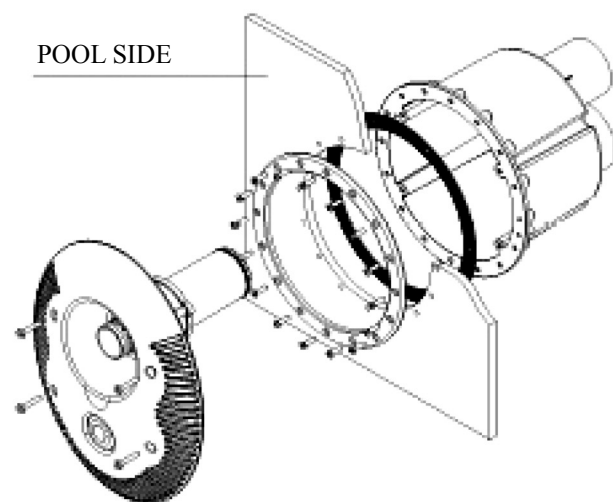
Picture 2b

**INSTALLATION IN PANEL OR SHEETMETAL SWIMMING POOL WITH FOIL**



Picture 2c

**INSTALLATION IN PREFABRICATED (LAMINATE OR POLYPROPYLEN) SWIMMING POOL**



Picture 2d

## 3. Jet swim body installation

### 3.1 Installation of jet swim device body in concrete ground

Stick hoses (no. 21 picture 3) on the 'jet swim' body (no. 20 picture 3) and connect them into the technologic device area (basin). Protect the hose endings against the concrete. Carry out the 'jet swim' body installation no. picture 20 3 as indicated in the picture 2a into the hole made in a concrete wall or into the boarding for concreting without a flange or padding. If the body is fixed to the wall, follow the instructions in the article 4 and install the pneumatic and air connection.

### 3.2 Installation of jet swim device body in concrete pools with foil

While mounting the 'jet swim' body into the walls of a concrete pool with foil, please follow the instruction written in the chapter no. 2 and 3. You can start to mount the padding and the 'jet swim' flange picture 2b. into the pool while fixing the 'jet swim' body into the wall of a pool. 2b.

Tighten the padding (no. 18 in the picture 3) into the 'jet swim' body (no. 20 in the picture 3) by 2 screws (no. 19 in the picture 3) and bear in mind that the pool foil can be situated between two padding (picture 2b). Fix the flange in the end (no. 17 in the picture 3) and tighten the screws (no. 16 in the picture 3), after this step is done, cut the foil from the inside part of the flange.

During the installation of the air and pneumatic lead, take the steps according to the article 4.

### 3.3 Installation of jet swim device body in panel or sheetmetal pool with foil

Prepare the opening of 270 mm diameter in the wall pool in a way that the centre of a jet is approximately 30cm under the water level as described in the article 2 and picture 1. Place the 'jet swim' body no.20 picture 3 from the inside part of the pool into the prepared opening. Fix the body by 8 self-drilling screws no. 19 picture 3 into the wall of the pool as described in the picture 2c.

Tighten the padding (no. 18 in the picture 3) to the 'jet swim' body (no. 20 in the picture 3) by 2 screws (no. 19 in the picture 3) After the installation of the foil, fix the flange (no. 17 in the picture 3) and tighten the screws (no. 16 in the picture 3), then cut the foil from the inside part of the flange.

During the installation of the air and pneumatic lead, take the steps according to the article 4.

### 3.4 Installation of jet swim device body in prefabricated (laminated or polypropylene) pool

Prepare the opening of 230 mm diameter in the wall pool in a way that the centre of a jet is approximately 30cm under the water level as described in the article 2 and picture 1.

Stick the padding (no. 18 in the picture 3) from the inside part of the pool wall and prepare openings for 16 screws of the flange (no. 16 picture 3).

Prepare the 'jet swim' body (no. 20 picture 3) from the inside part of the pool and tighten the flange (no. 17 in the picture 3) by screws (no. 16 in the picture 3) from the inside part as described in the picture 2d.

During the installation of the air and pneumatic lead, take the steps according to the article 4.

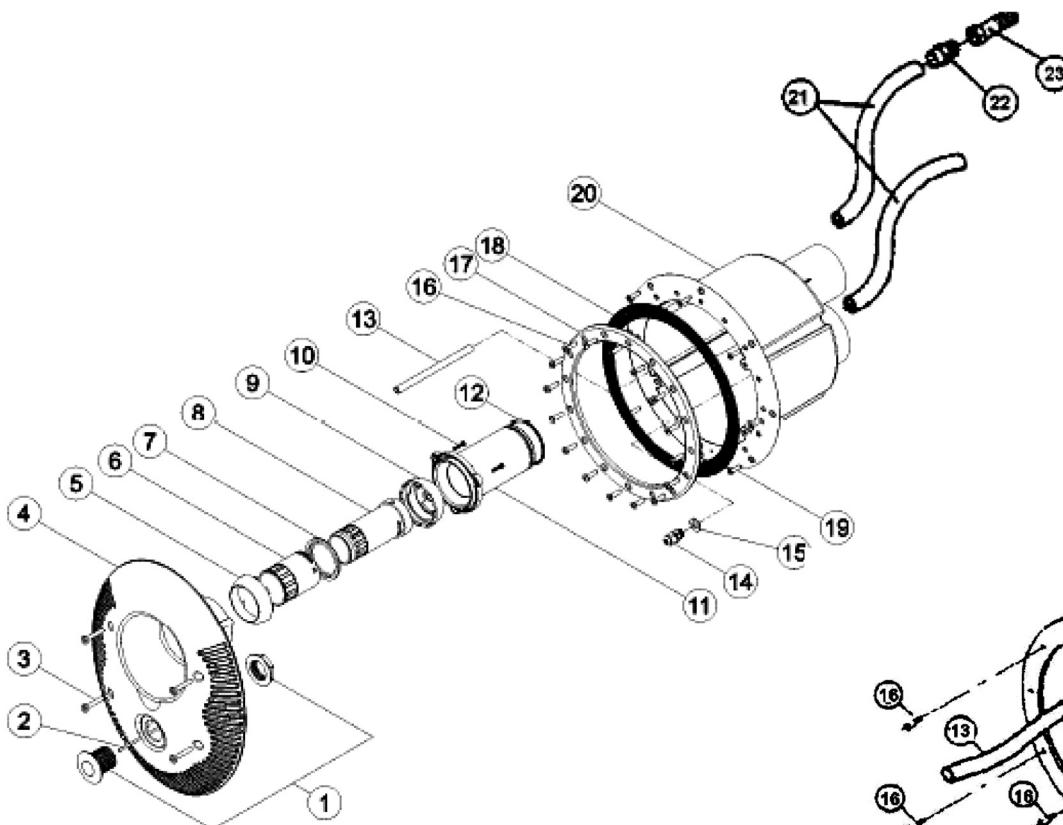
## 4. Air and pneumatic lead installation

### Air lead installation:

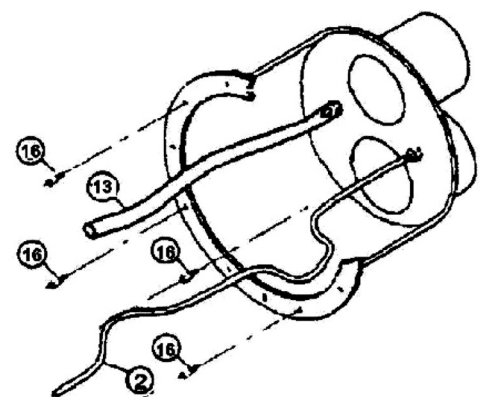
Stick the reducer (no. 22 picture 3) on the hose serving as an air lead and install the back-pressure valve (no. 23 picture 3). It is important to place a pressure-valve on the wall of the technologic housing in order to prevent the dirt suction (see picture no. 6) Finally, fix the elastic tube (no. 13, picture no. 3) by pressing it into a jet placed inside of the 'jet swim' body (see picture no. 4).

### Pneumatic lead installation:

This lead is containing the hose (no. 21 picture 3) serving as a protective lead for the pneumatic switch hose. Place the pneumatic switch hose into the pneumatic lead (hose no. 21 picture 2) and put its end through the opening place in the 'jet swim' body (no. 20 picture 3) and tightened it through the brushing (no. 14). The end of the hose (no. 2 in 13, picture no. 3) will be connected to the pneumatic switch (no. 1 in the picture 3) placed in the front of the 'jet swim' device.



Picture 3



Picture 4

## 5. Fitting of the 'jet swim' front cover

The complete front cover is delivered mounted and contains parts no. 1 to 12 (see picture 3). The exception is the transparent pneumatic hose (no. 2) being already a part of the 'jet swim' body (see picture 4).

Follow these steps while mounting the front cover:

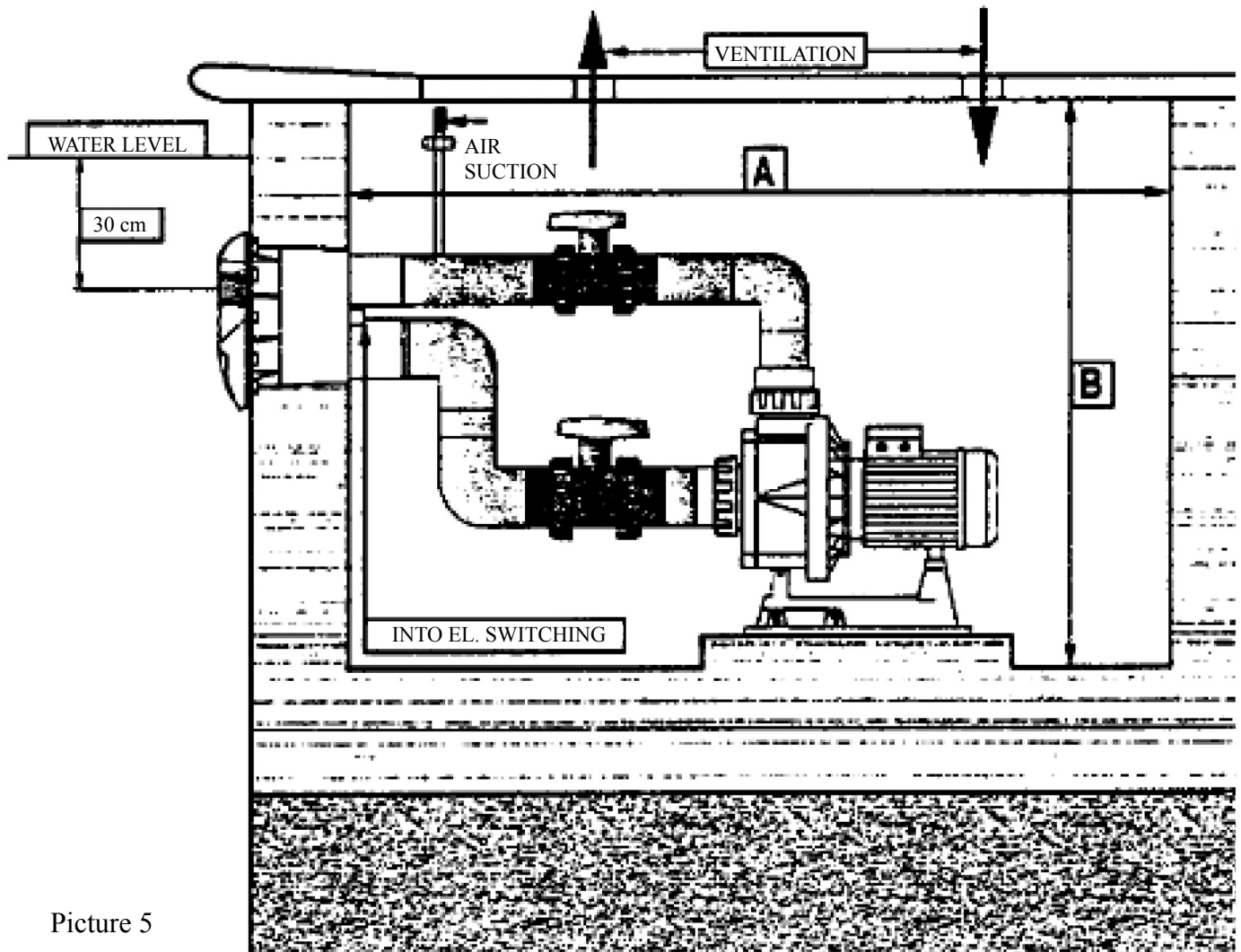
- Connect the hose no. 2, pull it up to the horn of the pneumatic switch (no. 1 in the picture 3) 3).
- Connect the hose no. 13, insert it into the jet on the front cover.
- Connect the complete front cover to the 'jet swim' body and make sure that the ring (no. 12) is inserted in the nozzle of the displacement opening (75 mm diameter).
- Tighten all four screws (no. 3 in the picture 3) While they are fitted tightly, the front cover is ready to use.

## 6. Minimum requirements for space and device installation

Before the initiation of the installation, it is necessary to consider the technological housing (basin) proportions where you want to place the 'jet swim'. Make sure in advance that you won't have any problems due to the lack of space while mounting the pump.

Minimum recommended proportions needed for the device installation of the technological housing, see picture 5 plus table.

width (mm)	length A (mm)	high B (mm)
750	1420	900

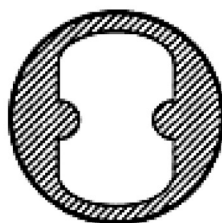


Picture 5

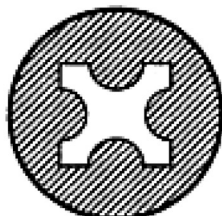
## 7. Use and settings of ELEGANCE 'jet swim'

from the water current or water with air created by this unit. Press the pneumatic switch to set the 'jet swim' from the pool (no. 1 in the picture 6). The turned on 'jet swim' force is: only the water current or water with the air. It depends on setting of the front jets (see picture 6). Only the water current: Maximum water flow is achieved by turning the inside jet 2 in the picture 6) to the left. You will reduce the water current by turning the jet to the right. The water current with the air: For setting or reducing the air flow, turn the outside jet (no. 3 in the picture 6).

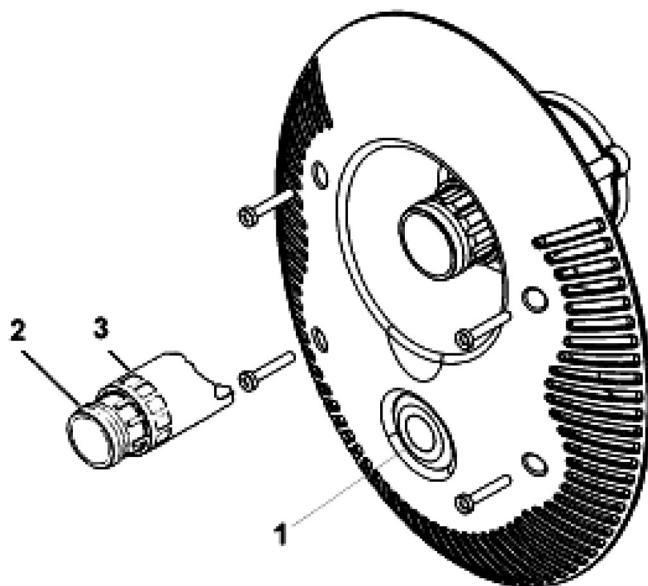
### JET SWIM NOZZLE DETAIL



MAXIMUM FLOW



MANIMUM FLOW

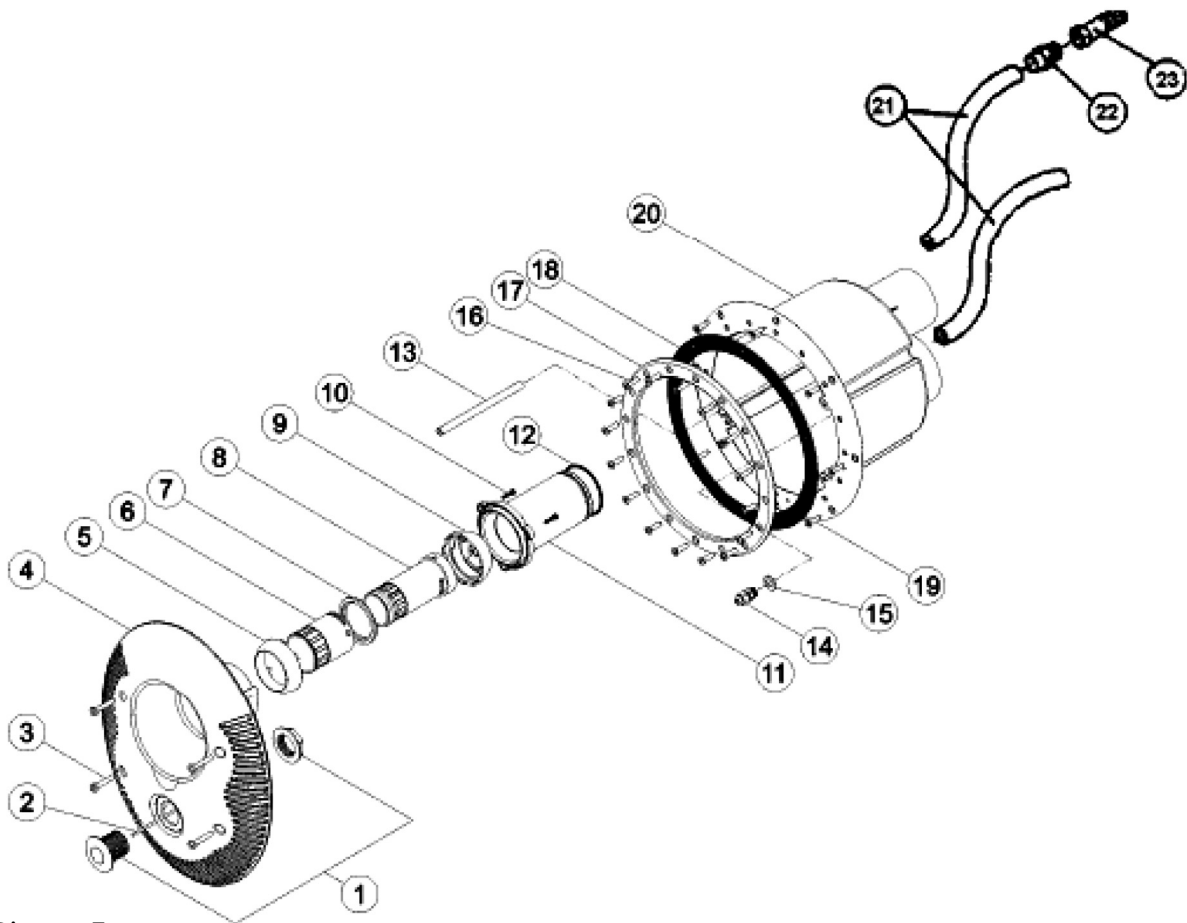


Picture 6



## 8. List of ELEGANCE ‘jet swim’ components

no.	description	amount	no.	description	amount
1	pneumatic switch	1 piece	13	elastic hose (air)	1 piece
2	pneumatic hose	7 m	14	pneumatic hose reducer	1 piece
3	front screw	4 pieces	15	O-ring of the reducer	1 piece
4	‘jet swim’ front cover	1 piece	16	screws of the flange	16 pieces
5	external ball	1 piece	17	flange	1 piece
6	jet regulating the air supply	1 piece	18	padding	2 pieces
7	supporting ring	1 piece	19	‘jet swim’ body screw – self-drilling	4 pieces
8	jet regulating the water supply	1 piece	20	‘jet swim’ body	1 piece
9	inside ball	1 piece	21	air and pneumatic leading hose	2 x 1 m
10	jet screw – self – drilling	3 pieces	22	reducer 20 x ½ ‘‘ ex	1 piece
11	jet application	1 piece	23	suction air back-pressure valve	1 piece
12	O - ring	1 piece			



Picture 7

## 9. Electric installation - WARNING

Electric installation should be carried out by an authorized engineer in conformity with general valid standards.

The tension of the electric supply must correspond to the data on the tag installed on every device. All metal parts of the device must be connected (earthed). Electric characteristic of circuit breakers and their rules must be in accordance with those, valid with the engine that should be protected with supposed operating conditions. All instructions implemented by the producer must be respected (see indication on the tag).

In case of the installation with a three-phase engine, connecting parts in the terminal board must be installed correctly (i.e. Y connection) while switching off the engine. Input and output conductors from the distribution box must be led through bushings preventing humidity and dirt intrusion into the distribution box. Conductors will have appropriate terminals for connection.

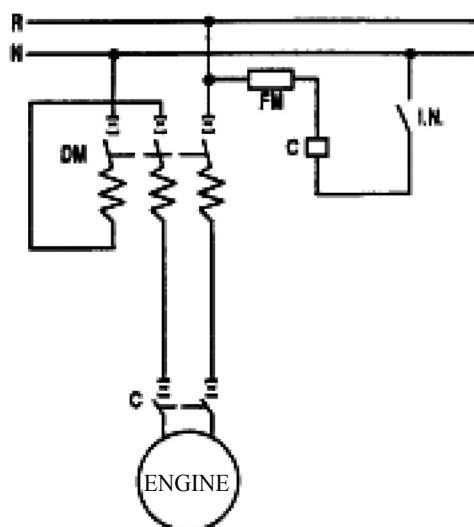
Electro-pneumatic switch must be installed on the dry place, above the water level in the distance not exceeding further than 7m from the pneumatic switch installed on the 'jet swim' front. The pneumatic hose (no. 2 in the picture 3) is designated for connecting to the electro-pneumatic switch (switchgear). It is very important to check if the hose is not bended anywhere.

Electro-pneumatic panel is composed of:

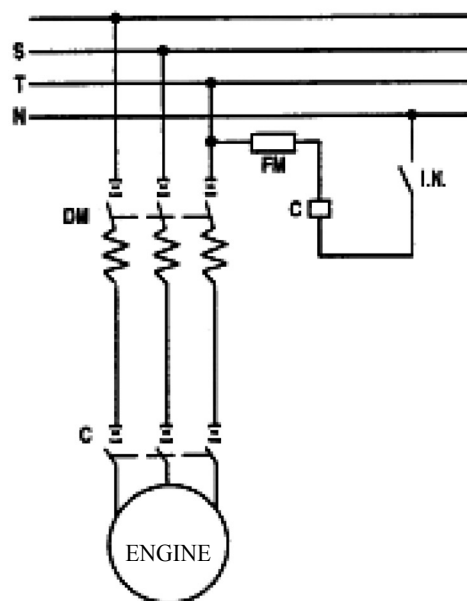
- 1 motor protection
- 1 electro-pneumatic switch
- 1 operating fuse

All these components should be installed in the waterproof plastic box with the rate of protection of IP55.

**Note:** You will receive more information about the installation, protection and maintenance from the electro-pneumatic board manual.



Picture 8

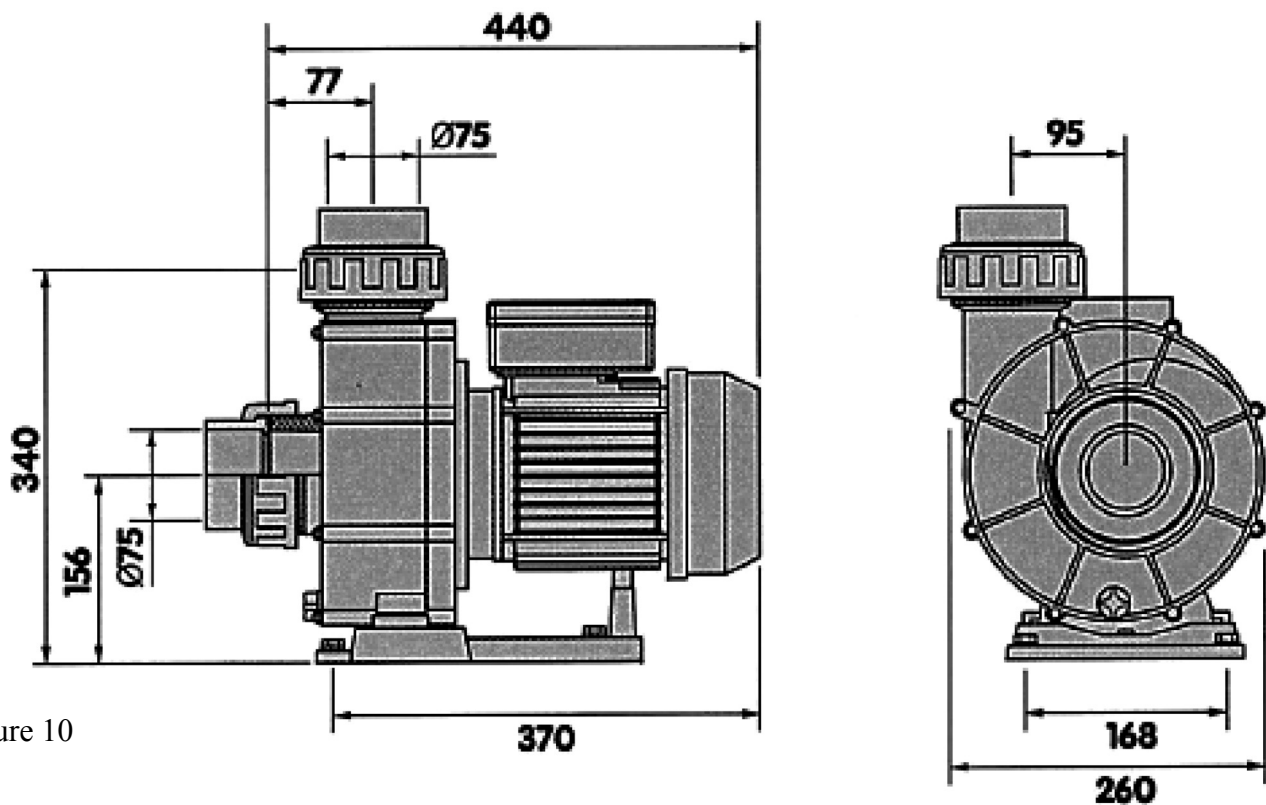


Picture 9

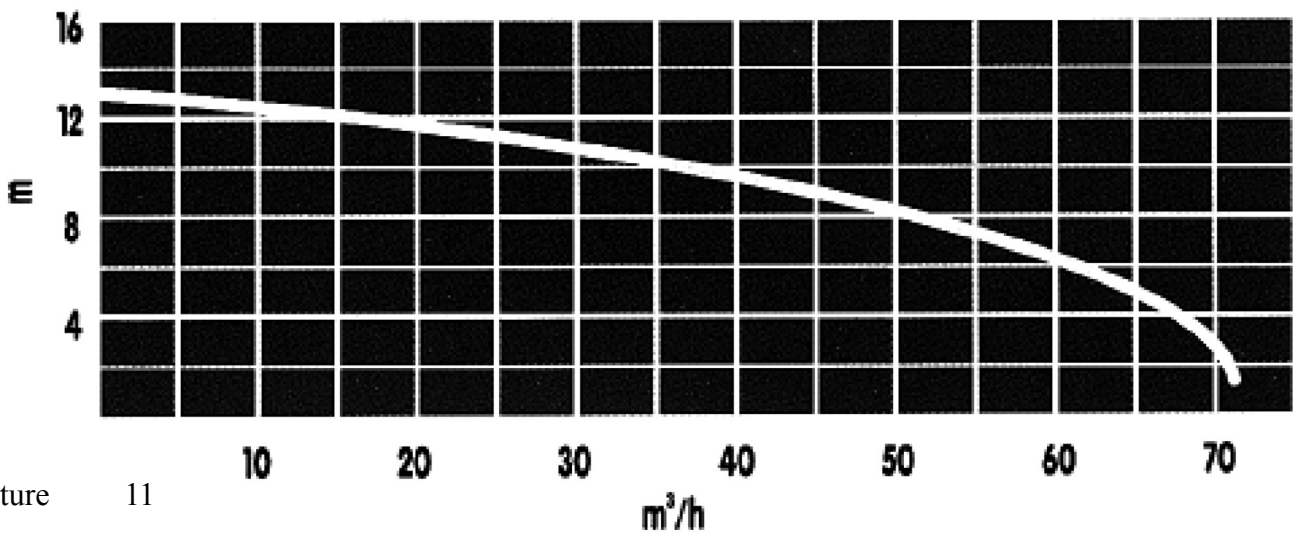
FM - control fuse, DM - heat engine protection, I.N. - electropneumatic switch unit, C - clammer

## 10. ELEGANCE ‘jet swim’ pump

The ELEGANCE ‘jet swim’ is using the STP-2200 pump of the three-phase type adjusted on 230/400V with the electric input of 2,2kW. For size see the picture 10 power characteristic picture 11.



Picture 10



Picture 11

**Conditions of guarantee**

Conditions of guarantee abide by the trading and guarantee conditions of your supplier.

**Secure disposal of the product after the lifetime expiry**

After the lifetime expiry, ensure its ecologic disposal made by a skilled company

**Complaints and customer service**

Complaints abide by the appropriate consumer protection rights. In the event of unrecoverable effect address the written complaint to your supplier.

Date.....

Supplier

--	--

**0044 (0)1268 710425**

**Sales@MyPoolDirect.com**



101 New London Road, Chelmsford, Essex, CM2 0PP. United Kingdom