

ABOVE-GROUND / PARTIALLY IN-GROUND / IN-GROUND

URBAN POOLS 4.20 m x 3.50 m
with integrated automatic cover

Made in France



URBAN POOLS



My beautiful pool, where I want, when I want!

URBAN pools are innovative: they combine the advantages usually associated with top-end pools, with the practical advantages of more modestly sized pools. Thanks to its small size, you can install an URBAN pool wherever you want. URBAN pools are the answer! A real pool secured by a submerged automatic cover, that, with its small foot print of less than 10m², can be slipped into any space.



Structure
Pool fittings
Liner



Automatic cover



Ladder
Filtration



Wooden structure
guarantees



The best of technical
know-how and safety

Fitted with submerged automatic covers that comply with the French pool safety standard (NF P 90-308), URBAN pools provide optimal safety and comfort of use.

URBAN POOLS 6.00 m x 2.50 m
with integrated automatic cover

ProSwell

POOLS AND SPAS FOR EVERYONE!



Wooden pools

PISTOCHE	80-83
PISCINE URBAINE	84-93
POOL'N BOX	94-95
TROPIC JUNIOR	96-97
TROPIC	98-103
WEVA	104-111
ODYSSEA	112-121
DONNÉES LOGISTIQUES PISCINES BOIS.....	122-123



MYPOOLDIRECT

Bespoke Pools, LTD
UK tel: 1 **01268 710425**
Sales@MyPoolDirect.co.uk

Pistoche

URBAN POOLS

TROPIC

WEVA

TROPIC



WOOD, A NATURAL MATERIAL

SUSTAINABLE FORESTRY

Procopi is committed to using wood from sustainably managed forests. As a guarantee, we have had our products certified by a renowned organisation and we organise regular inspections by an independent body.

Procopi is PEFC certified (chain of custody: FCBA/12-01382) for procurement of wood from sustainably managed forests according to the regulations set out by the Programme for the Endorsement of Forest Certification.

The PEFC label pertains to wood from European forests. This programme promotes the preservation of our heritage.

Being a natural material, wood will have some imperfections. These are normal and have no impact on the service life of the product.

A certain number are superficial and are not covered within the scope of the guarantee.

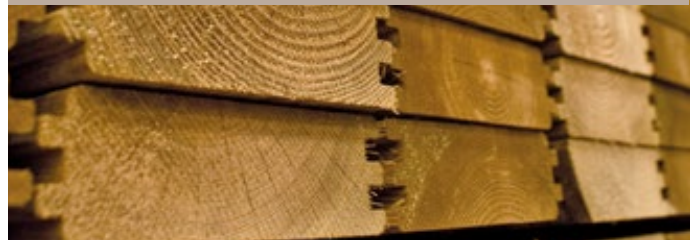
CAREFULLY SELECTED, CAREFULLY TREATED WOOD

Class IV autoclaved northern wood: the right choice for the pool structure

The mechanical and aesthetic properties of this wood are the result of its slow growth imposed by rigorous climatic conditions north of the 57th parallel. Class IV treatment in the autoclave makes this wood perfect for use outdoors in contact with the ground.

i All in-ground and partially in-ground pools must be protected using a Delta MS drainage membrane.

i Storage. If you do not intend to assemble your pool immediately, you should store it without opening it in a well-ventilated room, or failing this, in an area protected from humidity and sunlight. If, however, you were obliged to unpack your pool, redo and restrap the pallet. Once the pallets are undone, the kit must be assembled within 24 to 48 hours.



Composite French wood: ideal for pool coping.



A balanced mix of fine wood particles and a thermoplastic polymer, composite wood is free of knots, splinters and boasts an excellent service life outdoors. Soft to the touch, it is also low maintenance and comes in a range of colours (Coastal Grey or Havana).

COLOUR VARIATIONS

Colour variations are common to every species of wood. Treatment brings them out because the depth of penetration of the product will depend on the wood density and grain. Weathering of wood outdoors will significantly attenuate these colour variations.



SALT STAINS

Small green stains are frequently found on the surface of autoclaved wood. These can be removed with light sanding. If left untreated, this colour will disappear over time.



SPLITTING AND CRACKING

Wood expands and contracts when exposed to variations in humidity and temperature. As it dries, wood contracts unevenly resulting in the appearance of cracks. While these can seem to be cause for concern, they have no impact on the mechanical properties of the product and therefore do not fall within the scope of the guarantee.



SURFACE MOULD

Mould, caused by microscopic fungi, can grow on wood, particularly on resinous species, on which the growth can appear as "blueing". It is a surface phenomenon, exacerbated by heat, humidity and inadequate aeration and is characterised by stains ranging from light to dark blue. They can be removed by wiping the surface.

Remember that class IV treated wood is protected against attack by fungi that could destroy the physical and mechanical properties of the wood. For further information, please refer to Procopi's guarantees concerning the types of wood and their treatment.



RESIN BEADING

When resinous wood species are autoclaved, the alternating pressure and vacuum can cause sticky resin residues to rise to the surface. To remove them, scrape them carefully with an appropriate tool, being careful not to touch the wood. Turpentine spirits could also be effective, but could stain the wood if too much is applied.



GREYING

Wood exposed to sunlight is susceptible to greying. Some people like the silvery sheen of this natural patina. If, however, you would prefer the wood to keep its original colour with brown tones, apply a protective coating (lazure, oil) when the product is assembled.



KNOTS

Knots mark the places where branches were attached. The quantity and size depends on the species of wood and the sorting process. For outdoor installations, small adherent knots are acceptable. The more stringent the sorting process to limit the number and size of knots, the more expensive the wood will be.



JOINED WOOD

To ensure the highest quality in the selection of our wood, it is sorted meticulously before planing. Planks that feature defects on both sides are taken out. Defects (knots, cracks, flashes) are removed and the planks are joined together (see the image above).

This is why it is not unusual to find joined elements in a wooden pool, it in no way penalises the mechanical properties of the wood. For the same reason, imperfections on the interior surface of the pool (knots, cracks, flashes) are entirely acceptable.





A SUITABLE FILTRATION GROUP

The majority of the fittings and accessories equipping Proswell pools are made in France. You can be sure of excellent manufacturing quality, stringent quality control and perfect suitability.

Notably, each pool is fitted with a filtration group, that is a pump-filter combination, selected to filter the pool water in accordance with the standards in effect.

Only a good balance between the power of the pump and filtration surface area can ensure efficient filtration. If the through rate is too high for the surface area of the sand (determined by the diameter of the

filter), filtration will not be optimal. The maximum filtration rate for sand filters as defined by the standards is $50 \text{ m}^3/\text{h}/\text{m}^2$.

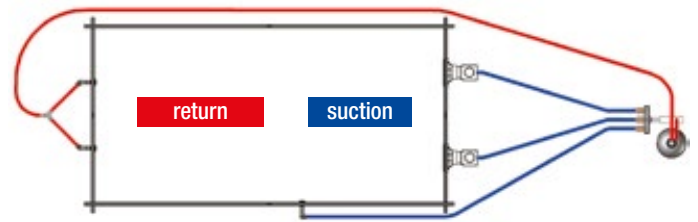
For this reason, Procopi tests each pool model/filtration group configuration in situ and monitors the flow rates and throughput rates. These tests are evaluated by independent laboratories who issue certificates of compliance.

The pump drives water circulation:

it draws water in through the skimmers and vacuum points (if any), pushes it through the filter and then returns the water to the pool through the return fittings.

The sand filter retains impurities:

As it passes through the filter medium, impurities (leaves, dust, etc.) are retained and the water is purified. It flows out of the filter clear.



WATER TREATMENT AND HYGIENE, A FEW BASIC PRINCIPLES.

As regards hygiene, there are no official regulations governing private pools. However, for the sake of your own health and that of those closest to you, we have provided some information on water treatment and basic maintenance of the filtration group.

Water treatment

To get the most out of your pool, you will need to optimise pool water treatment. Follow the recommendations concerning use of your filtration group: commissioning, frequency of use, bather load, water regeneration, maintenance and monitoring of this system (pipes, bolts, screws) and build-up of dirt in the filter (refer to the back washing procedure in the installation instructions enclosed with the filter).

Failure to respect maintenance recommendations will entail serious health risks, notably for children.

Hygiene

For the sake of your own health and that of those closest to you, you need to follow some rules!

This starts with good personal hygiene for the respect of all. Next, to ensure crystal clear water, follow the instructions set out under the "operation and maintenance" heading of the installation instructions. Pay particular attention to water treatment and testing intervals, as well as filtration and back wash cycles. Your pool water equilibrium depends mainly on you. Do not hesitate to consult any relevant documentation and follow the advice of professionals.



WINTERIZING

WINTERIZING THE POOL AND THE HYDRAULIC INSTALLATION

- Carry out a prolonged filter back wash.
Never empty the pool for winter (or for any long period of time...).
- In fact, the liquid mass plays a dual role acting as both thermal insulation and ballast, keeping the liner and the pool structure in good condition.
The water level, however, should be lowered to 10 cm below the mouth of the skimmer.
To drain water from the pool, either use a siphon, or turn the handle on the multi-port pump to Drain and allow the water to run out under the effect of gravity.
Water will flow out through the waste line. Do not run the pump during this procedure.
- Disconnect the pipe underneath the skimmer to allow the skimmer to act as an overflow in the event that precipitation causes the water level to rise too high. Remove any water treatment products from the skimmer (Chlorine tablets, flocculent, etc.).
- Unscrew the face ring on the return fitting inside the pool.
Using a threaded or rubber winterizing cap (not supplied), seal the return fitting from inside the pool.
Disconnect the return line at the pump.
- Drain water from the filter by unscrewing the drain plug at the bottom of the filter tank.
Do not replace the drain plug until the filter is being put back into service.
- Unscrew the drain plugs on the pump and prefilter. In the case of unprotected outdoor installations, remove and store the pump.
- Cut power to the filtration control panel.

- Add an algacide and a winterizing product to the pool water (not supplied).
 - Remove the stainless steel ladder.
 - Deploy the winterizing cover over the pool (if the pool is equipped with one).

NOTE: Winterizing is not mandatory, especially in climates where temperatures do not drop below zero. In this case, simply maintain the usual water level in the pool and run filtration for 2 to 3 hours each day. Check the water level in the pool at regular intervals.



THE WOOD

Wood is a living material, variations in temperature and humidity can cause it to contract or expand causing the wood to split or crack, this a natural phenomenon and in no way effects the service life of our products.

The wood is subjected to a class IV autoclaving treatment that complies with standards in effect and presents absolutely no danger to people or animals in direct contact with the wood.

You may choose to modify the original colour of the wood, use a suitable, aqueous phase, micro-porous product (lazure or coloured paint over an undercoat, or a colourless oil to nourish the wood). Procopi offers the SIKKENS CETOL range in an array of popular colours. However, these types of product can only be applied to wood with a moisture content of less than 15%.

Choose high quality products! They will give a better result over time. Do a patch test before applying the product.

To preserve the natural colour of your wooden pool, we recommend that you wait one year before applying a wood saturator to nourish and protect the wood. In fact, after living through 4 seasons, the pores in the wood open wider creating a greying effect. The saturator, applied after de-greying the wood, will adhere more easily to the wood.



Wooden structure guarantee:

The quality of the wood selected and the class IV autoclave treatment labelled CTB-B+ SP by the CTBA (SP: this denomination was created for CTB-P+ and CTB-B+ certifications to designate enhanced retention of organic copper type products). The wood is autoclaved after it is machined, this allows us to offer a 10 year guarantee on our wooden structures.

MY POOL DIRECT DOES NOT JUST OFFER A COMPREHENSIVE RANGE OF PRODUCTS,

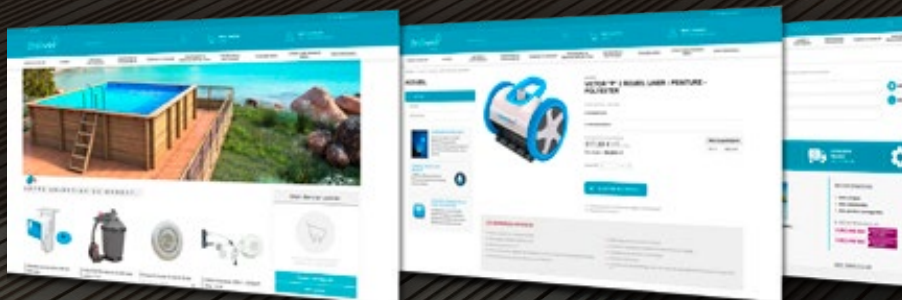
FROM DELIVERIES TO TECHNICAL ADVICE, WE ARE THERE FOR YOU EVERY STEP OF THE WAY.

DELIVERY TO YOUR DOOR,

Please contact us to discuss terms.

THE INTERNET SITE

- Product data sheets,
- Installation instructions,
- Customer accounts, order tracking,



WINTERIZING

Standard NF P90-307-1



Standard NF P90-306



Standard NF P90-306



Proswell wooden pools may be installed above-ground, in-ground or partially in-ground. Partially in-ground refers to a configuration where the pool structure is under the ground level, irrespective of the depth to which the structure is sunk

All in-ground and partially in-ground pools must be equipped with at least one of 4 safety standard compliant devices designed to prevent the risk of drowning

In the case of above-ground pools, the pool must be secured by removing the access ladder. All Proswell pools are fitted with ladders that fold upwards as standard

However, Procopi recommends that you reinforce safety by installing one of the systems mandatory for in-ground and partially in-ground pools.

The law provides for 4 means of securing the pool:

- **French standard NF P90-306:** Security fence, minimum height 110 cm measured from the ground with a gate that is held closed,
- **French standard NF P90-307-1:** P-AS fall detection alarm,
- **French standard NF P90-308:** Safety cover,
- **French standard NF P90-309:** Pool enclosure.

In this Proswell catalogue, you will find a range of standard compliant security systems: the P-AS alarm, winter and safety covers, bar covers and P-HS E automatic covers.



Standard compliant security systems are no substitute for the constant vigilance of parents or responsible adults.

Standard compliant equipment

Accreditation testing is carried out by an independant laboratory that may, if it is deemed necessary, request modification of the equipment or the installation instructions, and/ or in our own laboratory.

Once all tests have been sucessfully passed, the laboratory issues a certificate of compliance for each pool model tessted.

Every Proswell pool complies with French and European standards in effect governing pool kits :

- **NF EN 16582-1** | Private family pools/ part 1: general safety requirements and test methods.
- **NF EN 16582-2** | Private family pools/ part 2: general safety requirements and test methods for in-ground pools
- **NF EN 16582-3** | Private family pools/ part 3: general requirements concerning security and test methods for above-ground pools
- **NF EN 16713-1** | Private family pools/ Water distribution systems - Part 1: Filtration systems/ Requirements and test methods.
- **NF EN 16713-2** | Private family pools/ Water distribution systems - Part 2: Circulation systems/ Requirements and test methods
- **NF EN 16927** | Specific requirement, safety requirements and test methods



Everyone into Pistoche!

Safe, solid, beautiful and very safe, the little Pistoche pool is an instant hit with small children and ensures instant peace of mind for the adults watching over them.

Carefully designed for enjoyment and safety, Pistoche is the ideal pool for little children and cautious parents.



STYLISH FINISH!

Pistoche pools are now equipped with Aluminium coping.



ABOVE-GROUND CHILDREN'S POOL



SAFE

SELF-WINDING SAFETY COVER. *

Pistoche is equipped with a safety cover. Discrete and easy to use, the cover secures the pool while it is not in use. In addition to securing the pool, the cover protects the pool against evaporation and night time cooling. It also prevents pollen, dust and leaves from falling into the pool. The water stays clean, always ready for your little swimmers. A Pistoche exclusive!



1 The cover is built into a cover pit that is hidden under the edging.

2 Once the edging on all 4 sides has been lifted, the cover can be rolled out in just a few seconds by pulling on the strap, a sharp tug will cause the cover to automatically roll up.

3 Strong and hard wearing and fitted with a purpose designed fastening system, the cover can bear the weight of a small child.

* This cover is no substitute for common sense or individual responsibility. Not is it intended to replace the vigilance of parents and/or responsible adults which remains the key factor in ensuring the safety of young children.



SOLID

MADE IN FRANCE - 2 YEAR GUARANTEE.

Pistoche pools are made in Brittany in Northern France. Hard wearing materials and manufacturing quality are fully guaranteed.

WOOD



SOLID, TREATED WOOD - STRUCTURE MADE OF NORTHERN RED PINE (CLASS III & IV). Sturdy and aesthetic, Pistoche has a place in every garden.

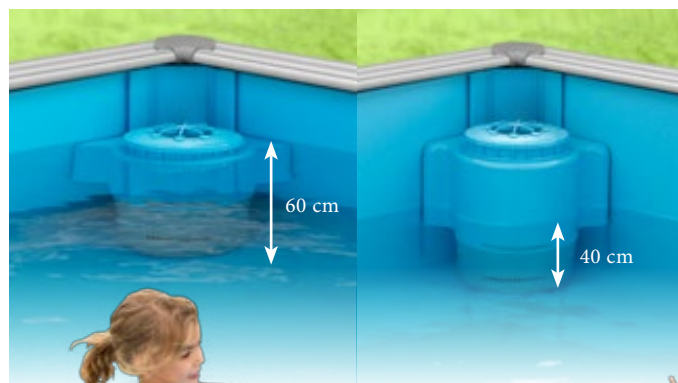
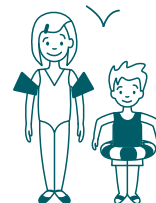


EVOLUTIVE

ADJUSTABLE FILTRATION HEIGHT, FOR A WATER LEVEL BETWEEN 40 AND 60 CM.

The cartridge filter, that ensures the quality of water in the pool, may be installed in any of the four corners so that it faces into the prevailing wind. The depth of the water may be adjusted depending on the height and age of the children: forty centimeters for the youngest children to splash around, and up to sixty centimeters for older children to start swimming. A Pistoche exclusive!

A Pistoche exclusive just for us!





Pistoche
by PROCOPI

ABOVE-GROUND CHILDREN'S POOL



Coping

- May be locked
- Lacquered, light grey aluminium

Safety cover

- Grey, reinforced 450g/m² PVC fabric



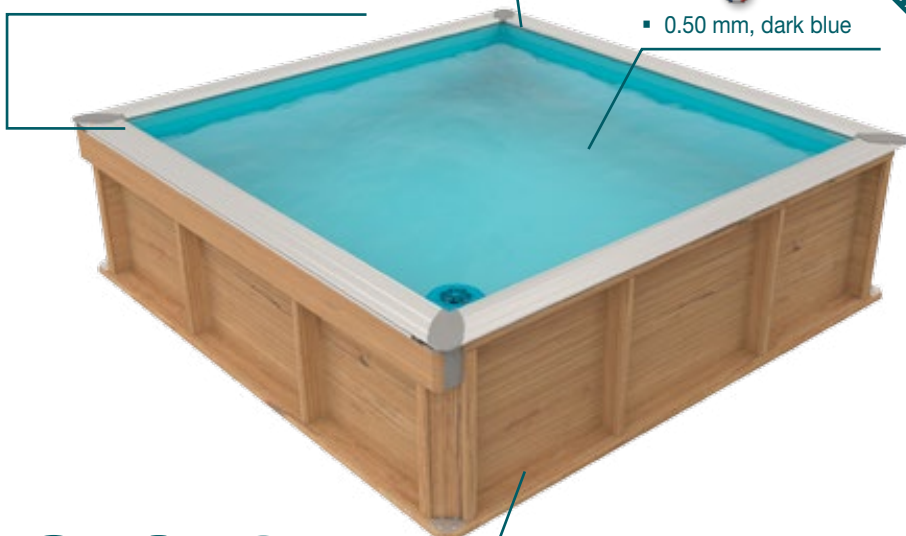
Self-winding roller

- Housed discreetly under the coping



Liner

- 0.50 mm, dark blue



Interlocking structure

- Northern pine, class 3 and 4,
- Thickness, 28 mm.



Underlay

- Underlay to be fitted under the liner.



Cartridge filter

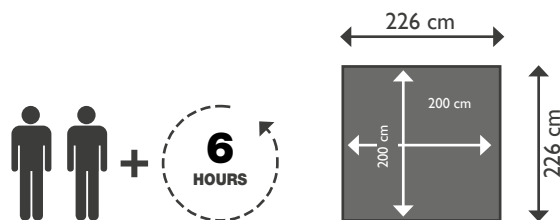


- Height adjustable for a water level between 40 and 60cm.



Code	EAN13	Description	Qty	Unit price	Qty	Unit price	Qty	Unit price	Qty	Unit price	Qty	Unit price
27160209	3566837150624	Pistoche 2 x 2 x 0.64 m	1	623.00	4	580.00	12	574.00	36	567.00	102	561.00

For transport costs, please enquire.



STANDARD EQUIPMENT

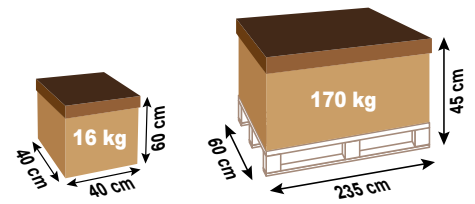
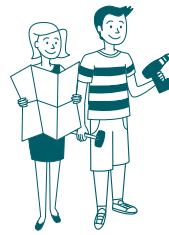
Description	
Lockable, light grey lacquered Aluminium coping	included
Planks of solid, class III and IV treated Northern Pine, thickness in mm, tolerance + or - 1 mm	28
Liner thickness	0.50 mm
Liner colour	Dark blue
Self-winding safety cover	grey

Description	
Height adjustable cartridge filter, water level from 40 to 60cm	included
Underlay	included
Guarantee on the structure	2 years
Liner guarantee	2 years
Filter guarantee	1 year

ABOVE-GROUND CHILDREN'S POOL



IN TWO PACKAGES



THE PISTOCHE POOL COMES IN TWO PACKAGES.

Package 1 contains: the height adjustable filtration system, blue, 0.50 mm liner, the iunderlay and the screws. The wooden structure is enclosed in the second package (included in the advertised price), this package contains all the wooden elements, the aluminium coping, the PVC profiles and the roller pre-fitted with the safety cover and its strap.

ACCESSORIES



THE 1 MONTH MAINTENANCE KIT COMPRISES:

- 3 graduated containers (1 litre) of bleach,
- 1 graduated container (1 litre) of algicide



THE ACCESSORIES KIT COMPRISES:

- 1 venturi cleaner
- 1 skimmer
- 1 pole with 5 sections to be mounted on the cleaner or the skimmer
- 1 thermometer
- 1 water line brush with 3 refills



	Code	EAN13	Description	Qty	Unit price	Qty	Unit price	Qty	Unit price
Pistoche accessories and maintenance									
1	27900200	3566837170882	Pistoche cleaning accessories kit	1	27.00	10	25.65	20	24.30
2	27900210	3566837170899	Pistoche pool water treatment kit	1	28.10	10	26.70	20	25.29
3	27900215	3566837175511	Pistoche reversible winter cover (PE 200g/m ²) with 8 eyelets around the periphery	1	35.80	6	34.01	12	32.22
4	27931650	3566837162061	Pistoche spare cartridge	1	15.20	8	14.44	16	13.68

POINT OF SALE/ EXHIBITION MATERIALS

PISTOCHE D'EXPOSITION COMPREND :

- 1 display Pistoche, fully assembled 2 x 2 m
- 1 suspended pediment comprised of: 4 Boat mobiles, 2 Fish mobiles, 2 Ring mobiles, a cardboard lighthouse (200 x 60 cm), 4 Pistoche logo stickers (Ø 50cm), 2 Cat stickers (26 x 5 cm)
- 1 pallet skirt

Display Pistoche, fully assembled in the factory and delivered on a pallet (2.4m x 2.4m x 2.55m).



Code	EAN13	Description	Net price exVAT.
10530200	3566837162276	Pistoche display pool, 2 x 2 m, assembled	731.00

URBAN POOLS

my beautiful pool, where I want, when I want!



Wooden structure guarantee

URBAN pools are made using wood from sustainably managed forests. The quality of the wood selected and the class IV autoclave treatment are labelled CTB-B+ SP by the CTBA. The autoclave treatment is carried out after machining, this allows us to offer a 10 year guarantee on the structure.

URBAN pools are innovative: they combine the advantages usually associated with top-end pools, with the practical advantages of more modestly sized pools. Thanks to its small size, you can install an URBAN pool wherever you want.



The best of technical know-how and safety

Fitted with submerged automatic covers that comply with the French pool safety standard (NF P 90-308), URBAN pools provide optimal safety and comfort of use.

Secreted under the pool edging, the submerged cover keeps the pool water clean and warm. It secures and protects your pool with total discretion.

In addition, URBAN pools are fitted out with high-end, state of the art technical equipment: LED underwater lights, automatic filtration management, in-pool ABS stainless steel ladder (2 sections), wooden access ladder, skimmer and return fittings the same colour as the liner and the automatic cover.



In just a few seconds, with the turn of a key, the cover hidden under the coping rolls out over the surface of the water. Effortless protection for your pool.



Pure lines

The intelligent, elegant design of the URBAN POOL guarantees seamless aesthetic integration into your garden. The structure, made of carefully selected solid wood, is compatible with in-ground, partially in-ground or above-ground installation. If the pool is installed in-ground or partially in-ground, a wooden plant housing (option) must also be installed to allow access to the filtration equipment.



URBAN pools embellish any space, lending it an instant visual appeal.



URBAN pools are the answer! A real pool secured by a submerged automatic cover, that, with its small foot print of less than 10m², can be slipped into any space.

ACHIEVE THE IMPOSSIBLE

Your dreams within your grasp

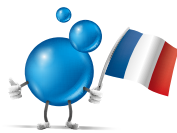


Total freedom

URBAN pools were purpose designed for small spaces. Their dimensions are carefully adapted to the restrictions of urban living, they fit in anywhere. They come in two versions, square and rectangular, with a surface area never exceeding 10 m².

A seductive price point

URBAN pools are real pools, fitted out like luxury pools and offered at a very interesting price. The Secret? Industrialisation of the design and manufacturing process. The factory in France where URBAN Pools are made, is a reference in this sector; it relies on tried and tested know-how and uses the best, state-of-the-art manufacturing equipment.



Warm, limpid water

URBAN pools were designed to accept optional equipment usually reserved to large top of the range pools. Notably plant housing large enough to hold a sand filter and a heat pump. Warm, clean water; you can enjoy an extended pool season.



Ideal for a busy life-style!

The URBAN pool is designed for busy city living. Its clever design simplifies and reduces maintenance, and the consumption of water, energy and pool chemicals is very low.

Swim!

Whether for pleasure, or to train, URBAN pools may be fitted with static swim belts (included as standard); ideal for working out at the intensity that you want. Comprised of a neoprene belt (waist circumference 60-105 cm) and an elastic strap (length 200 cm), it is the ideal system for an aquatic work out in a small pool.



URBAN POOLS

my beautiful pool, where I want, when I want!



Automatic cover

- Light grey



Ladder

- Aluminium/ABS ladder, 2 sections, 3 treads
- Wooden access ladder, 4 treads



Coping

- Double pine
- Thickness 28 mm
- Width 290 mm



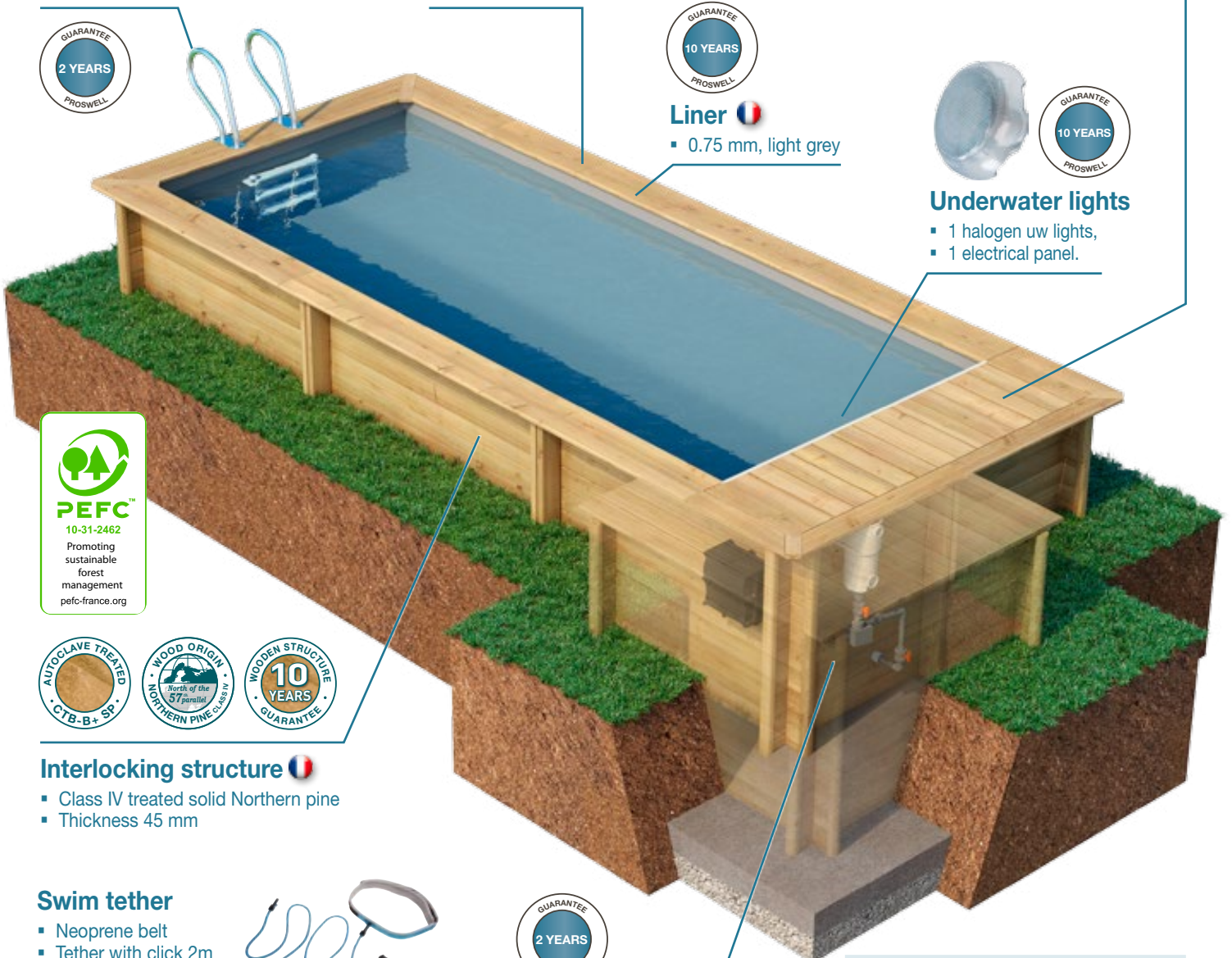
Liner

- 0.75 mm, light grey



Underwater lights

- 1 halogen uw lights,
- 1 electrical panel.



Interlocking structure

- Class IV treated solid Northern pine
- Thickness 45 mm

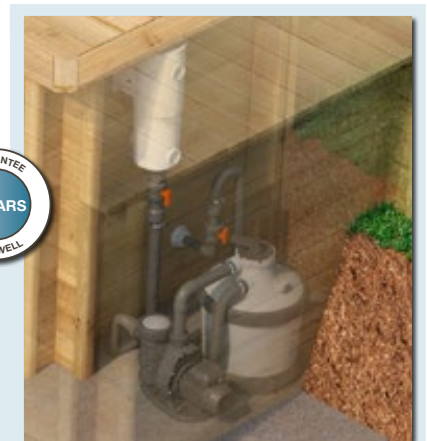
Swim tether

- Neoprene belt
- Tether with click 2m
- Pool deck fastener, 1 SS peg with bushing D6



Cartridge filter

- Filtration 4 m³/h



Underlay

- Underlay to be fitted under the liner



SAND FILTER (OPTION)

- Light grey sand filter P-GFI 400 4m³/h
- Removable lid
- 6-way valve
- Self-priming pump with pre-filter
- Pump/ filter connection kit
- Black ABS base
- Delivered with the filter medium

ABOVE-GROUND/ PARTIALLY IN-GROUND / IN-GROUND



i Above-ground Urban pool with deck.

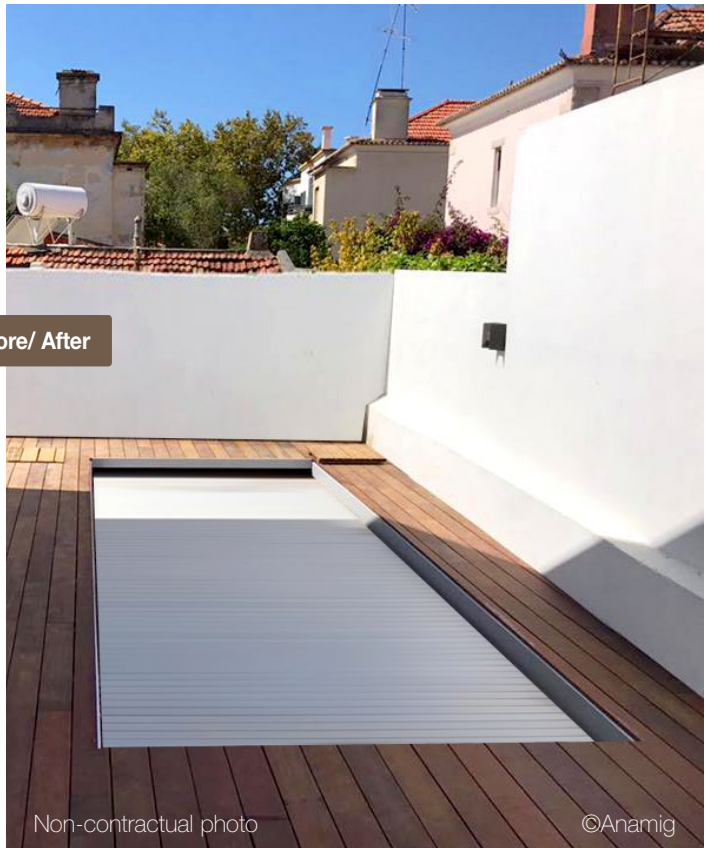


©Anamig
Non-contractual photo

Structure



©Anamig
Non-contractual photo



i Before/ After

Non-contractual photo

©Anamig

URBAN POOLS

my beautiful pool, where I want, when I want!

4 LEVELS OF EQUIPMENT



Structure
Pool fittings
Liner



Automatic
cover



Ladder
Filtration



Integrated, automatic cover and compact cartridge filter

AUTOMATIC COVER*

Housed discreetly in the pool, the submerged cover keeps the pool water clean and warm. It effortlessly secures and protects your pool.

* Version without plant housing, above-ground only



Integrated, automatic cover and wooden plant housing

WOODEN PLANT HOUSING

The wooden housing is made of slats 28 mm thick. The lid profile corresponds to the pool coping. In accordance with the French safety standard NFP 90-308, the lid is hinged and fitted with a lock. The plant housing is mounted at a corner to house the electrical components of the automatic cover and the filtration system. The plant housing is mandatory for in-ground and partially in-ground installation configurations.



Integrated, automatic cover, wooden plant housing, and sand filtration group



SAND FILTER

Comprised of a light grey sand filter P-GFI 400, 4m³/h, (delivered with the filter medium) with a removable lid, a self-priming pump with a pre-filter, a 6-way valve, a pump/ filter connection kit and a black ABS base.

Integrated, automatic cover, wooden plant housing, sand filtration group, and heating

HEATING

The Proswell BPN05 heat pump is ideal for URBAN pools with an air temperature of 15°C, the pool water can be heated to 26°C. It is delivered with a P-GFI 400, 6m³/h sand filtration group, a by-pass and 9m of piping to allow the heat pump to be installed up to 3.50 m from the pool.



ABOVE-GROUND/ PARTIALLY IN-GROUND / IN-GROUND



2 MODELS SQUARE OR RECTANGULAR



STANDARD EQUIPMENT

Description	
Double width pine coping, thickness 28 mm, width 290 mm	Included
Planks of solid, class IV treated Northern Pine, thickness in mm, tolerance + or - 1 mm	Included
Liner thickness	0.75 mm
Liner colour	Light grey
Number of skimmers P-PM body (colour matched to the liner)	1
Number of return fittings (colour matched to the liner)	1
Connectique hydraulique	Included
Filtration 4 m ³ /h	see version

Description	
Metallic structural braces	4
LED underwater light	1
Flow rate at the return fitting (m ³ /h)	4
Automatic safety cover	Light grey
Electrical control panel (cover, filtration and UW light)	Included
In-pool SS ladder	3 treads
Wooden, safety, access ladder	4 treads
Swim tether	Included
Underlay	Included

OPTIONAL EQUIPMENT FOR RETROFITTING TO EXISTING POOLS

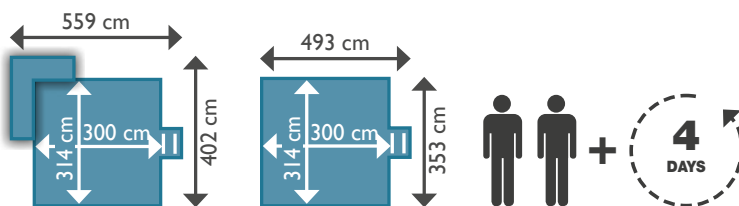
Code	EAN13	Description	Qty	Unit price	Qty	Unit price	Qty	Unit price
27900320	3566837206369	Filtration cartridge for Urban pools	4	24.00	8	22.80	16	21.60
27900300	3566837170905	Plant housing for in-ground or partially in-ground Urban Pools	1	670.00	2	636.50	4	603.00
27900305	3566837170929	Option: Wooden plant housing and sand filtration, (4m ³ /h)						1,056.00
27900310	3566837170936	Option: Wooden plant housing, sand filtration (6m ³ /h) and 5 kW heat pump						1,927.00

COMMISSIONING

i A technical team comes to the installation site. The technician installs the liner and the automatic cover on the Urban Pool, without any participation from the end user. The end user must, however, be present on the day of installation.

Code	EAN 13	Description	Net price exVAT.
92250	3566837163884	Urban Pool liner and automatic cover installation service	520.00

URBAN POOLS 4.20 m x 3.50 m



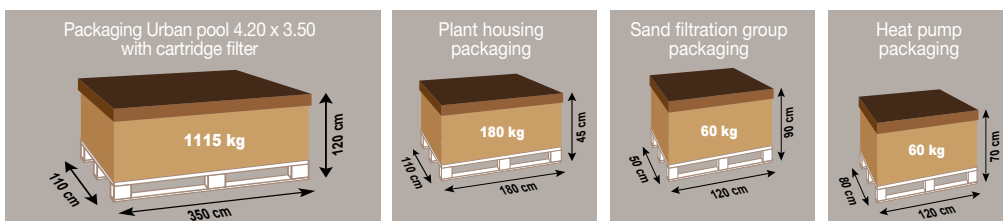
Outer dimensions (cm)	419.2 x 353
Outer dimensions with plant housing (cm)	485.7 x 401.4
Water surface dimensions (cm)	314 x 300
Height, coping included (cm)	133
Water volume (m ³)	13.32
Water surface area (m ²)	9.42

Code	EAN13	Description	Qty	Unit price	Qty	Unit price	Qty	Unit price
27181614	3566837163570	Urban pool 4.20x3.50, GR, Ht:1.33 with automatic cover	1	5,200.00	2	4,940.00	4	4,680.00
27181214	3566837184957	Urban pool 4.20x3.50, GR, Ht:1.33, automatic cover and plant housing	1	5,870.00	2	5,576.50	4	5,283.00
27181314	3566837184971	Urban pool 4.20x3.50, GR, Ht:1.33, automatic cover, plant housing and sand filter	1	6,250.00	2	5,937.50	4	5,625.00
27181414	3566837184988	Urban pool 4.20x3.50, GR, Ht:1.33, automatic cover, plant housing, sand filter and heating	1	7,120.00	2	6,764.00	4	6,408.00

27991901 Delivery to your door POA

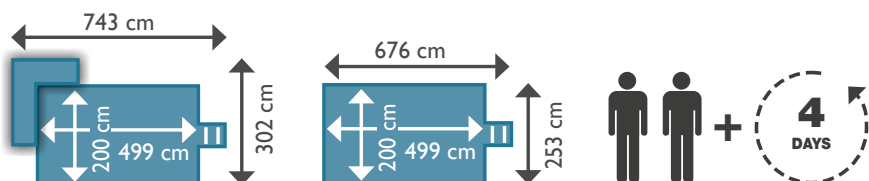
Transport costs are quoted net of any discount.

LOGISTICS DATA



	Code	Urban pool	Plant housing	Sand filter	Heat pump
4.20 x 3.50	27181614	YES	-	-	-
	27181214	YES	YES	-	-
	27181314	YES	YES	YES	-
	27181414	YES	YES	YES	YES

URBAN POOLS 6.00 m x 2.50 m

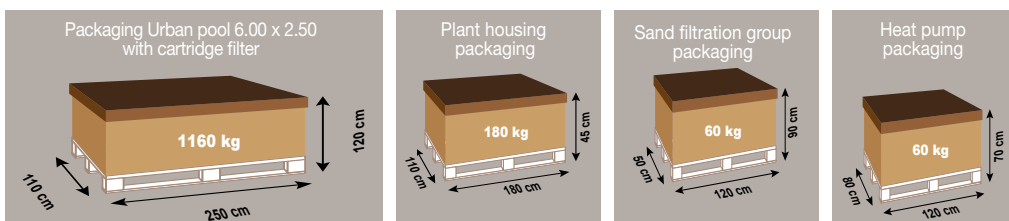


Outer dimensions (cm)	602.9 x 253
Outer dimensions with plant housing (cm)	669.5 x 301.4
Water surface dimensions (cm)	499 x 200
Height, coping included (cm)	133
Water volume (m ³)	13.42
Water surface area (m ²)	9.99

Code	EAN13	Description	Qty	Unit price	Qty	Unit price	Qty	Unit price
27180614	3566837163563	Urban pool 6.00x2.50, GR, Ht:1.33 with automatic cover	1	5,200.00	2	4,940.00	4	4,680.00
27180214	3566837184940	Urban pool 6.00x2.50, GR, Ht:1.33, automatic cover and plant housing	1	5,870.00	2	5,576.50	4	5,283.00
27180314	3566837184964	Urban pool 6.00x2.50, GR, Ht:1.33, automatic cover, plant housing and sand filter	1	6,250.00	2	5,937.50	4	5,625.00
27180414	3566837184995	Urban pool 6.00x2.50, GR, Ht:1.33, automatic cover, plant housing, sand filter and heating	1	7,120.00	2	6,764.00	4	6,408.00

27991902 Delivery to your door Transport costs are quoted net of any discount. POA

LOGISTICS DATA



	Code	Urban pool	Plant housing	Sand filter	Heat pump
6,00 x 2,50	27180614	YES	-	-	-
	27180214	YES	YES	-	-
	27180314	YES	YES	YES	-
	27180414	YES	YES	YES	YES

New in
2018

URBAN POOLS 6.55 x 3.50 m

LARGE AND
WELL EQUIPPED



Structure
Pool fittings
Liner

Automatic
cover

Ladder
Filtration



Ladders

- SS in-pool ladder, 3 treads,
- Wooden access ladder, 4 treads.



Liner

- 0.75 mm liner, light grey



Coping

- Made of class IV treated pine, thickness 28 mm and width 290 mm (2 x 145 mm).



Return fittings and skimmers

- 2 return fitting(s)
- 2 skimmer(s)



Automatic cover

- Light grey



Interlocking structure

- Class IV treated solid Northern pine, rounded finish,
- Thickness, 45 mm,
- Galvanised steel supporting braces



Underlay

- Underlay to be fitted under the liner.

Filtration group

- Sand filtration group, light grey filter P-GFS 500-EH 8m³/h
- 6-way valve
- Self-priming pump with pre-filter
- Pump/ Filter connection kit
- Black ABS base
- Delivered with the filter medium



In the case of a partially in-ground or in-ground installation, a plant housing is mandatory to provide a dry pit to house the automatic cover motorisation.

Contact your Procopi agency.



OPTIONAL EXTRAS

URBAN POOLS 6.50 x 3.50 m can be fitted with additional equipment such as a heat pump, a slat water electrolyser, an automatic regulation system, etc.

Proshell Comfortline Inverter heat pumps are listed on pages 34-35.



The filtration group must be installed in a plant room.

Examples of pine plant housings: see page 20



ABOVE-GROUND/ PARTIALLY IN-GROUND / IN-GROUND

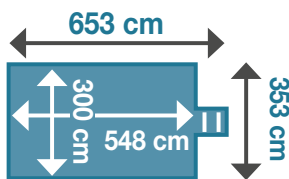


The Urban pool 6.5x 3.5 is not fitted with an integrated filtration housing.

LARGE AND WELL EQUIPPED

A large wooden pool with automatic cover.

A blend of generous dimensions, high-end equipment and careful craftsmanship by a French manufacturer known for their skill and diligence.



Description	Details
Outer dimensions (cm)	653 x 353 cm
Innder dimensions (cm)	548 x 300 cm
Height, coping included (cm)	133 cm
Water volume (m ³)	21.89
Water surface area (m ²)	16.44

Code	EAN13	Description	Qty	Unit price	Qty	Unit price	Qty	Unit price
27184218	3566837210922	Wooden pool/auto cover, 6.5x3.5, GR, Ht:133	1	8,110.00	2	7,704.50	4	7,299.00

27991200	Delivery of a wooden pool to your door	Transport costs are quoted net of any discount.						POA
----------	--	---	--	--	--	--	--	------------

STANDARD EQUIPMENT

HIGH-END EQUIPMENT

- Automatic slat cover
- Ready to use, properly sized sand filtration group.

The 6.5 x 3.5 m Urban pool is fitted with all the equipment it needs to run, as standard

Description	
Metallic structural braces	Included
Coping made of class IV treated pine, thickness 28 mm and width 290 mm (2 x 145 mm).	Included
Planks of solid, class IV treated Northern Pine, thickness in mm, tolerance + or - 1 mm	45
Liner thickness	0.75 mm
Liner colour	Light grey
Number of skimmers P-GM Long	2
Number of return fittings	2
Buriable hydraulic fittings, Ø 45 mm	Included
Sand filter	P-FS

Description	
Sand filter diameter (mm)	500 EH
Flow rate at the return fitting (m ³ /h)	9.70
Sand supplied (kg)	75
6-way valve	Included
1/4 turn valve, return/ suction	Included
In-pool SS ladder	3 treads
Wooden, safety, access ladder	4 treads
Underlay	Included
Automatic safety cover	Light grey
Electrical control panel	Included

COMMISSIONING

i A technical team comes to the installation site. The technician installs the liner and the automatic cover on the Urban Pool, without any participation from the end user. The end user must, however, be present on the day of installation.

Code	EAN 13	Description	Net price exVAT.
92250	3566837163884	Urban Pool liner and automatic cover installation service	520.00

THE POOL'N BOX

IN-GROUND / PARTIALLY IN-GROUND / ABOVE-GROUND



BOXING CLEVER!



Return fitting and skimmer

- 1 return fitting
- 1 skimmer P-PM body



Ladders

- SS in-pool ladder, 3 treads,
- Wooden access ladder, 4 treads.

Coping

- Class IV treated pine, 28 mm thick and 195 mm wide.



Liner

- 0.75 mm, light grey

Locking mechanism

- for total safety.



i Northern pine: a hard, almost rot-proof wood that grows slowly in sustainably managed Scandinavian forests. Pool'n Box structures are guaranteed 10 years.



10-31-2462
Promoting sustainable forest management
pefc-france.org

Interlocking structure

- Solid class IV treated, autoclaved Northern Pine, rounded finish
- Thickness, 45 mm,
- Galvanised steel supporting braces.



Filtration group

- Flow rate at the return fitting 5.2 m³/h (clean filter),
- Sand filter P-FI, Ø 400, anti-UV treated,
- 6-way valve; filtration/backwash/rinse/circulation/drain/closed,
- Filtration pump fitted with a pre-filter; 0.33 kW.



Underlay

- Underlay to be fitted under the liner

New in
2018

POOL'N BOX

BOXING CLEVER!

Pool'n Box is an elegant, high quality pool, built to last. The ultimate proof: 10 year guarantees on the wooden components and five and two year guarantees on the filtration system.

Ladders

Pool'n Box is cleverly designed with a storage box tucked under the coping. Pool robot, balls, swimming aids, water toys: all the clutter can be cleared away in the blink of an eye to leave the pool area beautifully tidy.

Even better, **Pool'n Box** is very attractively priced. With **Pool'n Box**, you're boxing clever: DIVE IN!

ADVANTAGES

- Pool'n Box has a very small footprint so its fits easily into tight spaces.
- Pool'n Box is equipped with a proper sand filter.
- No need for plant housing: the filtration system fits into the generously sized integrated box leaving plenty of space for storage.
- The structure is made of solid Northern Pine, the industry standard, this guarantees a long service life and a sound investment.



Pool'n Box, a clever pool

FAMILY FUN MODE

Toys, rings, floats of every colour thrown everywhere.

No more hoses cluttering the lawn or terrace!



PLEASURE TO BEHOLD, DESIGN MODE

After the fun, return to style and elegance.

The pool area is clutter free with no trip hazards! Picture perfect

In the blink of an eye, all tidied away!

Optional UW lights

- SeaMaid LED underwater lights, with white light (44100019) of colour (44072019). These lights can be simply mounted on a 1.5" return fitting. See page 8.



Description	Detail
Outer dimensions with box (cm)	626 x 253 cm
Water surface area dimensions (cm)	500 x 200 cm
Height coping included (cm)	133 cm
Water volume (m ³)	12.2 m³
Water surface area (m ²)	9.99 m²

Code	EAN13	Description	Qty	Unit price	Qty	Unit price	Qty	Unit price
27180018	3566837210915	Wooden pool 5x2 with integrated box, height 133	1	3,558.00	2	3,380.10	4	3,202.20

27991902	Delivery to your door	Transport costs are quoted net of any discount.						POA
----------	-----------------------	---	--	--	--	--	--	------------

STANDARD EQUIPMENT

Description	
Metallic structural braces	Included
Coping made of Class IV treated pine, width 195 mm	Included
Planks of solid, class IV treated Northern Pine, thickness in mm, tolerance + or - 1 mm	45
Liner thickness	0.75 mm
Liner colour	Light grey
Number of skimmers P-PM corps	1
Number of return fittings	2
Buriable hydraulic fittings, Ø 45 mm	Included
Sand filter	P-FI

Description	
Sand filter diameter (mm)	400
Hydraulic connections	Included
Filtration	4 m³/h
Sand supplied (kg)	25
6-way valve	Included
1/4 turn valve, return/ suction	Included
In-pool SS ladder	3 treads
Wooden, safety, access ladder	4 treads
Underlay	Included

TROPIC JUNIOR

ABOVE-GROUND ONLY

A POOL FOR EVERY-ONE!



Coping

- Class IV treated pine, 28 mm thick and 145 mm wide

Liner

- 0.50 mm, dark blue



Cartridge filter



Interlocking structure

- Class III and IV treated Northern pine
- 28 mm thick



Underlay

- Underlay to be fitted under the liner

STANDARD EQUIPMENT

Description	
Class IV treated, single width pine coping, thickness in mm, width 145 mm	28
Planks of sold class III and class IV treated Northern Pine, thickness in mm, tolerance + or - 1 mm	28
liner thickness	0.50 mm
Liner colour	dark blue

Description	
Submerged cartridge filter	included
Underlay	included
Structure guarantee	2 years
Liner guarantee	2 years
Filter guarantee	1 year

TROPIC JUNIOR

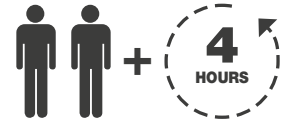
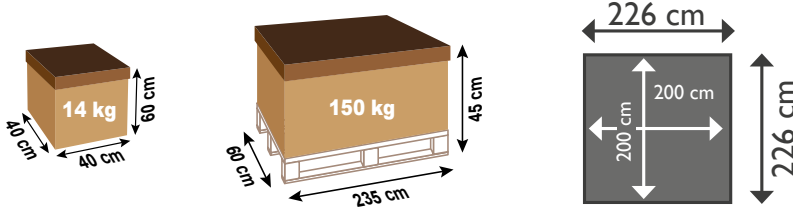
PERFECT FOR ANY GARDEN

TROPIC JUNIOR

Particularly well designed, this small above-ground TROPIC JUNIOR pool is practical, robust, beautiful and made in France. With a very small foot print, only 2 m x 2 m, it is the perfect size for small children. TROPIC JUNIOR provides fun for the whole family. .

TROPIC JUNIOR is packaged in two boxes:

- Box 1/2 contains the filter cartridge, the 0.50 mm dark blue liner and the nuts and bolts.
- Box 2/2 (pallet) contains the wooden structure.



Description	Details
Outer dimensions (cm)	226 x 226 cm
Inner dimensions (cm)	200 x 200 cm
Height, coping included (cm)	68 cm
Water volume (m ³)	2.30
Water surface area (m ²)	4
Packaging	1 box + 1 pallet

Code	EAN13	Description	Qty	Unit price	Qty	Unit price	Qty	Unit price	Qty	Unit price	Qty	Unit price	
27160409	3566837191481	Tropic Junior 2x2x 0.64m	1	560.00	4	522.00	12	516.00	36	510,00	102	504,00	
27991900	3566837159597	Delivery to your door	Transport costs are quoted net of any discount.								POA		

ACCESSORIES



Pistoche accessories (see the illustrations page 83), are fully compatible with TROPIC JUNIOR pools.

Code	EAN13	Description	
Accessories and maintenance			
27931650	3566837162061	Pistoche spare cartridge	Page 83
27900200	3566837170882	Pistoche cleaning accessories kit	Page 83
27900210	3566837170899	Pistoche pool water treatment kit	Page 83
27900215	3566837175511	Pistoche reversible winter cover (PE 200g/m ²) with 8 eyelets around the periphery	Page 83

